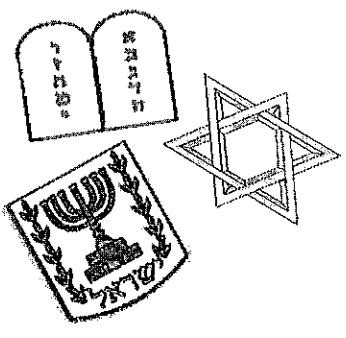
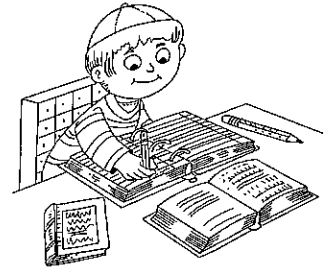


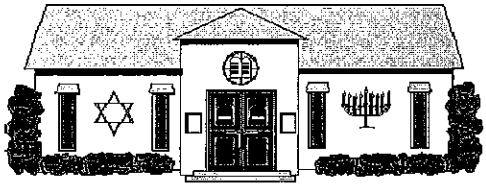
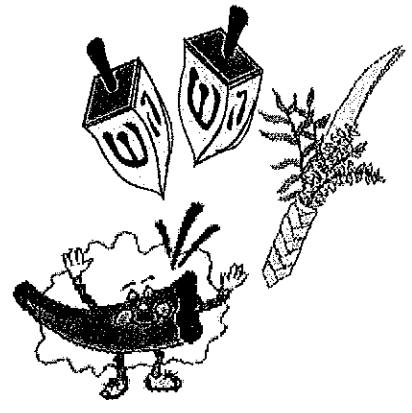
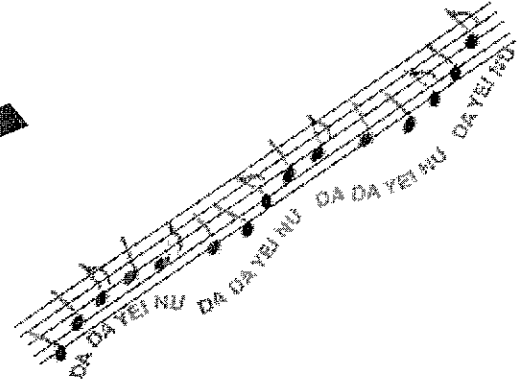
Shalom



לימוד  
*Learning*  
Limud



עבודה



Temple Beth Elohim  
Parent's Manual  
2011-2012

10 Bethel Road Wellesley, MA 02481-3595  
Tel. 781-235-8419 \* Fax 781-431-1638

**TABLE OF CONTENTS**

<b>I. Education Program</b> .....	<b>2-9</b>
School Mission Statement .....	2
Kindergarten .....	2
Grade One .....	3
Grade Two .....	3
Grade Three .....	4
Grade Four .....	5
Grade Five .....	6
Beit Midrash (3 <sup>rd</sup> , 4 <sup>th</sup> & 5 <sup>th</sup> Grade) .....	7
B'nei Mitzvah Magical Mystery Tour .....	8
Havayah: The High School Experience .....	8
Family Learning .....	9
Tzedakah .....	9
Passport to Israel .....	9
<b>II. Policies and Procedures</b> .....	<b>10-13</b>
Attendance Policy .....	10
Special Needs .....	11
Homework .....	11
Student Evaluation .....	11
Appropriate Drop-off Time .....	11
Religious School Traffic .....	11
Registration .....	12
School Cancellation Announcements .....	12
No Cleats, Please (and other issues of respect) .....	12
<b>III. Youth Groups</b> .....	<b>13</b>
Chaverim, Chalutzim, Yedidim .....	
<b>IV. The <i>Madrachim</i> (Teacher Assistants) Program</b> .....	<b>14</b>
<b>V. The <i>Limud</i> &amp; BM<sup>3</sup>T Committee</b> .....	<b>14</b>
<b>VI. Our Religious School Faculty</b> .....	<b>15</b>
<b>VII. Parental Involvement in the School</b> .....	<b>18</b>

## **LIMUD PROGRAM MISSION STATEMENT**

The Temple Beth Elohim Limud Program strives to provide a meaningful and engaging learning program for grades K - 5, including formal and informal experiences and family learning opportunities.

### **Goals:**

- To develop and inspire a community of educated and caring Jewish children, knowledgeable about and committed to the philosophy and practices of Judaism.
- To create a stimulating and experiential program that enables our students and their families to experience the joy of Jewish living.
- To engage students in learning the key components of Jewish education - rituals, Hebrew and the holiday cycle, Torah, prayer and ethics, Jewish history, music and Israel.
- To prepare our children to understand and live by the Jewish values of worship, *tzedakah* and social justice.

## **I. Education Program**

### **PRIMARY DEPARTMENT (Kindergarten to 2nd Grade)**

**Grades K-2 meet Sundays, 8:45 a.m. - 10:45 a.m. or 11:15 a.m. to 1:15 p.m.**

In addition to the individual programs explained below, students will participate in a fun, engaging music program and social justice projects that emphasize not only giving money, but also doing righteous deeds. Families will have the opportunity to join together for holiday celebrations and special family programs.

### **KINDERGARTEN - Torah Lens**

#### **GOALS:**

- Kindergarten students will begin to develop a connection to their classroom community and the Jewish community at large as they engage in a curriculum that integrates formal and informal learning.
- Through Torah and holiday stories, students will start developing connections to their Jewish roots, holiday traditions and *mitzvot*.
- Students will learn the Hebrew letters through auditory, visual and kinesthetic approaches and will begin to learn simple Hebrew words that will provide the foundation for Jewish life vocabulary.

#### **CURRICULUM:**

Our experiential curriculum evolves from the question "Who Am I?" Through a variety of activities, including Bible and holiday stories, music, drama and arts and crafts the children begin to develop a sense of connection from home to the synagogue and to the larger Jewish community. Students learn the meaning of *mitzvot* and how *mitzvot* apply to their every day lives. Hebrew is introduced auditorily, building on Jewish vocabulary that relates to family, Hebrew name, holiday and Shabbat blessing. We introduce the

Hebrew letters using the book "Sam the Detective." Families are invited to a special Family Program and blessing of Consecration, a family picnic and multiple community holiday celebrations. Children are also invited to participate in *Chalutzim*, the junior youth group for grades K and 1 that meets 4 times a year.

**Teachers:** Marilyn Preman and Michelle Zaff

### **GRADE ONE – Israel Lens**

#### **GOALS:**

- By studying about our ancestors in the Torah, holidays and related mitzvot, first grade students will begin to develop an understanding of our connection as a Jewish people to the land of Israel.
- Students will be engaged in a pre-reading program that provides exposure to Hebrew letters and vowels. Students will continue to increase their repertoire of Jewish life vocabulary.

#### **CURRICULUM:**

Our first graders will participate in an interactive curriculum that focuses on holidays, *mitzvot* and *K'lal Israel* (Jewish people). Students will read Torah stories that focus on these topics as they explore how we are connected to Jewish people around the world and to the land of Israel. This multi-faceted curriculum includes music, story-telling and arts and crafts. In addition, the children will be introduced to the Hebrew alphabet (aleph-bet) and vowels and will continue to add Hebrew words to their Jewish Life vocabulary. They will be encouraged to explore Jewish literature with regular visits to our TBE library, including the opportunity to take home library books. Parents are invited to a special program recognizing the accomplishments of the first graders. Children are also invited to participate in *Chalutzim*, the junior youth group for grades K and 1 that meets 4 times a year.

**Teachers:** Sharon Levy and Ariel Goldenthal

### **GRADE TWO – G'milut Chasadim Lens**

#### **GOALS:**

- Through the study of Jewish values and selected *mitzvot* the students will develop an appreciation of God's world and their responsibilities to make it a better place.
- Students will begin to decode Hebrew words by blending sounds, recognizing syllables and learning some idioms of the Hebrew language.
- Students will expand their knowledge of Torah stories, focusing on texts that teach us that because we are created in the image of God, we have responsibilities to humanity.

#### **CURRICULUM:**

As Jewish people, we are commanded to take care of the world. To better understand our responsibilities in the world, second grade students will examine the creation story and other Bible stories, holiday celebrations and customs through the lens of *G'milut Chasadim* and *Tikkun Olam*. They will explore the difference between "*mitzvah*" and "good deed" as they consider our relationship to God and our world.

Building on the previous year's introductory Hebrew lessons, children will review the letters and vowels and will start recognizing sounds and short words. In each curricular area, children will engage in learning in a multi-sensory way, using music, arts and

crafts, stories, games and other interactive learning modalities. When students complete their learning of the Hebrew Aleph Bet, families join together at a *Siyyum Aleph Bet* celebration. Children are also invited to participate in *Chaverim*, the junior youth group for grades 2 and 3 that meets 4 times a year.

**Teachers:** Dale Norman, Fran Slate and Amira Mintz-Morgenthau

### **INTERMEDIATE DEPARTMENT (3rd to 5th Grade)**

**Grades 3, 4, and 5 meet twice weekly:**

**Sundays from 8:45-10:45 a.m. or 11:15 a.m - 1:15 p.m., and,**

**Tuesday 3:30–5:30 p.m. or Wednesday 4:00 – 6:00 pm.**

### **GRADE THREE – Torah Lens**

#### **GOALS:**

- Students will develop an understanding of the structure of Torah, *T'filah* (prayer) and the Jewish calendar.
- Students will examine a variety of blessings as they appear in the *Siddur* (prayer-book) and Torah and explore how they can use blessings in their daily life.
- Students will explore the Torah to learn about the beginning of Judaism from God's call to Abraham to Joseph's rise to power in Egypt.

#### **CURRICULUM:**

In Grade 3, students advance their study of Hebrew by attending mid-week religious school, dedicating additional time to learning how to decode and read in Hebrew. The Hebrew curriculum focuses on *B'rachot* (blessings), the meaning of the blessings and why blessings are an important part of Jewish liturgy. In this transition year from the primary grades to the intermediate grades, the curriculum weaves Torah into learning at many levels. The students will learn about the structure of the Torah. They will examine the Jewish calendar and, as they study holidays, they will examine Torah texts to better understand the sources for these celebrations. Children will also start to develop an understanding of our *siddur* (prayerbook), why we pray and different types of prayers.

Each week students in grades 3-5 participate in a brief lesson on *T'filah* (prayer) in the Sanctuary led by one of our clergy and our music Educator, Matt Stern. Students have the opportunity to practice their emerging Hebrew skills, learn holiday and liturgical music, and become familiar with the choreography of Shabbat services. This year, the 3<sup>rd</sup> graders will join 4<sup>th</sup> and 5<sup>th</sup> grade students in *T'filah* in January as they gain proficiency in reading Hebrew and can actively participate in the service. Children are also invited to participate in *Chaverim*, the junior youth group for grades 2 and 3 that meets 4 times a year.

In third grade, we introduce our "**Passport to Israel**" program which is a partnership among our families, Temple Beth Elohim and the Combined Jewish Philanthropies that facilitates learning about Israel and provides joint financing for a student's future visit to Israel.

**Teachers:** Ilana Benivgy, Caren Swerdlick

## GRADE FOUR – Israel Lens

### **GOALS:**

- Students will study *T'filot* (prayers) and the structure of the service, learning the language that ties our history to the present.
- Students will discover the story of our people as we immerse from slavery to freedom and the journey that led to the birth of the Jewish nation.
- Students will examine the Exodus text in the Torah along with some Midrashim (commentaries) to explore ideas about leadership and partnership with God

### **CURRICULUM:**

Fourth grade students continue to explore the narrative of the Jewish people, moving from the Genesis stories to learn in depth select texts from the book of Exodus about the creation of a nation – the people of Israel. For the first time, students will be introduced to specific texts from weekly Torah portions. This exploration will lay the foundation for the 5<sup>th</sup> grade when they will study from the *TaNakh* (Hebrew Bible).

Students will learn Hebrew through the structure of a Shabbat service. They will focus on the meaning of prayers, and learn Kabbalat Shabbat and Shabbat morning prayers in Hebrew, as they increase their fluency with our liturgy. Each Hebrew lesson builds on prior lessons, providing continual reinforcement and progress. The students play a variety of language games to strengthen reading skills and develop fluency. Students participate in *T'filah*, our weekly prayer service with other students in 3<sup>rd</sup> and 5<sup>th</sup> grades. They will also have the opportunity to help lead parts of the service where they have mastered the prayers. In addition, students will be introduced to cantillation to lay the foundation for mastering skills for Torah chanting. Parents are invited to celebrate with their children when they receive their own *TaNakh* (Hebrew Bible) at the end of the year.

Children are also invited to participate in *Yedidim*, the junior youth group for grades 4 and 5 that meets 3 times a year, and participate in one Shul-In (Friday evening to Saturday morning).

**Teachers:** Melissa Rubin, Anne Crystal & Jenifer Gold

## GRADE FIVE – G'milut Chasadim Lens

### **GOALS:**

- Students will learn the structure of the *TaNakh* (Hebrew Bible) and study select texts from Prophets to gain a deeper understanding of *G'milut Chasadim* and *Tikkun Olam*.
- Students will study *T'filot* (prayers) in the *Amidah*, the central prayer of the service, in a way that connects us to the legacy of our forefathers and mothers.
- Students will apply the lessons of the prophets to the message of the *Amidah* to begin to define their own sense of responsibility to the world.

### **CURRICULUM:**

The fifth grade year is designed to challenge our maturing students to discover Jewish life as both a life-long continuum and a daily living experience. The study of the Jewish life cycle enables students to examine celebrations across a lifetime, including procedures at the end of life, and extrapolate meaning from those events. Fifth grade students will also consider how life cycle events have evolved over the years and how they can bring personal meaning to these milestones. Students also revisit the Jewish holiday cycle with an eye toward gaining new understanding through the *mitzvot* (commandments) associated with each of the holidays. A third piece of the curriculum is *The Gift of Jewish Wisdom*. Students will examine how the values and ethics found in our sacred texts apply to our lives today. They receive a copy of the Jewish Publication Society *TaNakh* (Hebrew Bible) and learn about its structure. During the year, they will explore the *TaNakh* through the study of the Jewish imperative to engage in *G'milut Chasadim* (acts of loving kindness) by reading selected texts in the book of Judges and several prophets.

In Hebrew, students attend *T'filah*, our weekly prayer service, and refine their reading and chanting skills. Prayers and liturgy serve as a vehicle to introduce and empower students to use their growing *siddur* (prayer book) vocabulary. Upon attaining a level of mastery, students have the opportunity to lead the other students in prayer. The Hebrew textbook helps students to make a connection between ancient and modern Hebrew. Through the study of liturgy, students develop a fuller appreciation for the Shabbat services at Temple Beth Elohim, both in structure and meaning.

Children are also invited to participate in *Yedidim*, the junior youth group for grades 4 and 5 that meets 3 times, and participate in one Shul-In (Friday evening to Saturday morning).

In addition to several community holiday celebrations, parents will join us for a Moving On ceremony that recognizes 5<sup>th</sup> grade students as they are about to enter our B'nei Mitzvah Magical Mystery Tour (BM<sup>3</sup>T) program for 6<sup>th</sup> and 7<sup>th</sup> grade.

**Teachers:** Yvonne Asher, Geoff Mostow and Miriam Smirnov

### **Beit Midrash Curriculum (Grades 3-5)**

Beit Midrash (House of Learning) is a unique and exciting approach to Jewish learning for Grades 3-5 at TBE. The program involves students in rich, meaningful and experiential Jewish learning through engagement with age-appropriate works of Jewish fiction, the study of our sacred texts, and innovative Hebrew learning in a small-group setting. Beit Midrash families also participate in creative Jewish learning and celebration, as well as community-building activities designed to deepen the Jewish journey of individual families and the community as a whole.

The three components of Beit Midrash are described below:

#### **Chavurot (Book Groups)**

Students, along with their parents, read five or six works of contemporary Jewish children's fiction each year. Guided curricular materials for each book are provided to families, with weekly reading assignments and discussion questions. On Sunday afternoons throughout the year, students gather as a community with their teacher to discuss each book. In an experiential and hands-on learning environment, students explore the characters and themes of each book within the context of Jewish life, text and tradition. Each grade has a specific curricular focus; Third Grade explores Jewish identity through family relationships and the celebration of holidays, Fourth Grade focuses on Ancient and Medieval Jewish history and tradition, while Fifth Grade learns about and connects to the American Jewish experience.

#### **Family Learning and Celebration**

Throughout the year, Beit Midrash families gather as a sacred community to learn, grow and have fun together. This year, we'll be sharing a Shabbat evening, celebrating the festive holidays of Sukkot and Purim and enjoying the special beauty of Havdalah (service to conclude Shabbat). Beit Midrash families are also warmly encouraged to participate actively in synagogue-wide family programming, such as M3 (Mishpacha Mitzvah Missions) and the family learning program provided as an introduction to the JAWS (Jewish Actors' Workshop) Performance in May.

#### **Hebrew Learning and Tefillah (Services)**

Hebrew is an essential part of the Beit Midrash experience! Students can participate in small-group Hebrew learning at TBE on Sundays or Tuesdays, study privately with a tutor, or receive Hebrew learning in a day school setting. In order to provide students who receive Hebrew language learning at TBE with the same worship opportunities as Limud students, the Beit Midrash community participates in a half-hour of **T'fillah** each Sunday and Tuesday. Led by our clergy and Music Educator Matt Stern, T'fillah is times to pray, sing, learn and reflect together.

If you would like to learn more about Beit Midrash, please contact Laura Hyman, Director of Beit Midrash and Havayah, at 781-235-8419 ext. 212, or [lhyman@tbewellesley.org](mailto:lhyman@tbewellesley.org).

## B'nei Mitzvah Magical Mystery Tour (BM<sup>3</sup>T) Learning Program for Grades 6-7

The learning program for grades 6 and 7 is called the "B'nei Mitzvah Magical Mystery Tour" or "BM<sup>3</sup>T." This program is a bridge between the Limud (K-5) and Havayah (8-12) programs.

BM<sup>3</sup>T provides opportunity for exploration and challenge in a structure that is different from the Sunday morning Limud program and is designed to meet the particular developmental needs of students of this age group. It includes classroom learning, community service work, informal learning on retreats, community building and social activities.

Parents will receive a separate parent manual for BM<sup>3</sup>T this month. If you have questions about BM<sup>3</sup>T, please contact Dr. Judy Avnery, Limud & BM<sup>3</sup>T Director at 781-235-8419 x210 or [javnery@tbewellesley.org](mailto:javnery@tbewellesley.org). We look forward to welcoming your 6<sup>th</sup> and 7<sup>th</sup> grade students!

## Havayah: The High School Experience Our Learning Program for Grades 8-12

"Havayah" is the Hebrew word for a great (or positive) experience. When our students participate in Havayah, they not only learn about Jewish life, they experience it! Havayah's mission is to help teens experience joy in Jewish learning, pride in being Jewish, and commitment to participation in Jewish life.

Havayah is a UNIQUE learning program for our teens, now beginning its fifth year. The program is based largely on the principles of experiential education. In creating Havayah, we sought to combine the best elements of formal, informal and family education into a cohesive program whose goals are Jewish identity development and community-building. The program includes chavurot (small elective groups), retreats, Shabbat programming and youth groups.

Havayah has been nationally recognized as an innovative, exciting model of education for Jewish teens. This is NOT your typical Hebrew High School experience! For more details, please contact Laura Hyman, Havayah and Beit Midrash Director at 781-235-8419 x 212 or [lhyman@tbewellesley.org](mailto:lhyman@tbewellesley.org)

### **FAMILY LEARNING**

Jewish Learning at TBE is a life long journey. Whole family involvement in a child's Jewish education creates connection to community and Jewish identity. Empowering family members to become Jewish models and teachers for their children strengthen the home as a center of Jewish life. Over the years family education at TBE has evolved to meet the changing needs of our families. Family learning is an integral part of our core curriculum and combined the best of our formal and informal education. Please check the calendar for upcoming exciting events. For more information please contact Mara Rubinstein at 781-235-8417 x 218 or [mrubinstein@tbewellesley.org](mailto:mrubinstein@tbewellesley.org)

### **TZEDAKAH**

Generosity is one of the hallmarks of Jewish life. Tzedakah (the opportunity to do a righteous deed for another), whether it be through monetary contributions, non-perishable food items for the hungry or clothing for the needy, is something we take very seriously. We hope you will help your child participate in these activities. The collections are distributed to worthy causes decided jointly by the students, teachers and school administration.

### **PASSPORT TO ISRAEL**

The Myra and Robert Kraft Passport to Israel Program is a special savings plan which helps fund an educational trip to Israel during the teen years. A visit to Israel, for a teenager, has been shown to be an invaluable aid in helping to strengthen a young person's long-term Jewish identity and commitment to Judaism. The program unites families, congregations and Combined Jewish Philanthropies (CJP) in a partnership to help make an Israel experience an affordable part of our children's education. This program begins when a child enters either 3rd or 7th Grade. To foster a closer connection to Israel, mini-units are sprinkled throughout the curriculum, as well as a major unit about our homeland in Grade 3. Please note, the cost of an Israel experience ranges from \$2500 to \$5000. This savings plan is for approximately \$2500.

## **II. Policies and Procedures**

### **ATTENDANCE POLICY**

#### **Goals of Limud Program**

The Temple Beth Elohim Limud program strives to provide a meaningful and engaging learning experience. The school structure reflects our deep belief that religious education is much broader than a formal classroom experience. We want our children to form bonds with their classmates from other towns, experience the richness of Jewish worship and have the time to delve deeply into matters of Jewish values, ethics, holidays and ritual, music, texts, Bible, Israel, and Hebrew.

#### **Why Consistent Attendance is Important**

- Our curriculum is cumulative - knowledge and skills are built throughout the year. Grades K-2 meets only 50 hours a year and grades 3-5 just 100 hours a year.
- Full participation is necessary so that each child achieves a meaningful religious school experience and helps to create a cohesive educational community. Participation includes both attendance in class and completing home assignments.
- Absences are disruptive for individual students, for students who attend on a regular basis and for the class as a whole.
- Children who are frequently absent feel less confident in the class, and the teacher has to devote time to reviewing material rather than moving the class forward.

#### **What do I do if my child has to miss a class?**

We realize that it is sometimes necessary for students to miss school. Teachers take attendance regularly, and they will be following up with students who are absent.

- If your child is going to miss a class, please call the Temple Limud office, 781-235-8419 x215 or e-mail the teacher. Teachers will send home the material missed in class, and parents are expected to work with their child to complete the assignment before the next class.
- If you anticipate that your child will have multiple absences, please contact Dr. Judy Avnery, Limud and BM<sup>3</sup>T Director. She will work with you to develop an individual plan for your child, which may include an independent project or other arrangement.
- In the case of extensive absences, Dr. Avnery will contact the parents to determine an appropriate course of action to ensure a meaningful Jewish education for their child.

*The attendance policy has been implemented through the recommendation of the Limud Committee in 2007- 8.*

### **SPECIAL NEEDS**

**Arlene Lemieux** is our Learning Support and B'nei Mitzvah Coordinator. She joined the faculty to help students succeed academically, socially and behaviorally in their classes. Arlene has adopted a consultative approach, working with faculty and professional staff to design a positive learning environment for all students. She provides educational and behavioral strategies to teachers, children and families. By providing a nurturing experience, our children can feel comfortable and successful. Arlene looks forward to hearing from parents to form a "partnership in holy work" that will enable children to bridge the gap between their secular and religious lives.

### **HOMEWORK**

Our goal is to engage our children in important discussions and to provide challenging activities. In order to obtain a knowledge base from which to draw information and formulate thoughtful opinions, students may be expected to complete small, weekly homework assignments. If a child is absent, please contact the teacher or classroom buddy for homework. The child will return confident, up-to-date and able to participate fully in the next class.

### **STUDENT EVALUATION**

The Temple Beth Elohim Religious School faculty work hard at creating an atmosphere in which children like being Jewish and have positive Jewish experiences. We praise them, challenge them and encourage them to work to the best of their abilities. We offer an opportunity to learn new skills and explore ideas in a safe, yet challenging environment.

If a child is having difficulty in school, we will let you know. If a child needs extra attention, we will address each child and each situation appropriately. When a child does his/her best, we will praise him/her.

Parents of students in Grades K-5 will Progress Report at the end of the school year. The school staff and parents work as a team to make each student's experiences a successful and positive one. Please remember, the Limud Director and teachers are always available to discuss your child's progress.

### **APPROPRIATE DROP-OFF TIME**

Children may be dropped off up to 15 minutes prior to scheduled class time on midweek religious school days. Children supervised by a parent (or responsible adult) are always welcome outside of class time. However, due to safety and supervision concerns, we cannot assume responsibility for unattended children.

### **RELIGIOUS SCHOOL TRAFFIC**

We are so glad that construction on the parking lot and the path from the Schofield School is finally completed. You now have two options for your child's drop-off and pickup. You can park and walk your child into the building or wait in the car line. Please note that the parking lot was designed to accommodate only one lane of traffic and therefore if you choose to park you will not be able to get out until the drop-off or pick-up line is over. You can always continue to park at the Schofield School for easier in and out access. We encourage you to organize car pools with other families for mid-week and Sunday morning sessions to reduce the number of cars

coming and going to the temple. More detailed instructions for drop-off and pick-up will be sent to you before the beginning of the school.

*We thank you for your patience, cooperation and suggestions.*

### **REGISTRATION**

Help us to help you register on time! Registration packages for the coming school year are mailed the third week in March. Reminders will be in the temple bulletin and e-mail blasts. If you have not received the registration package by the end of March, call or e-mail Heather Pellegrini, [hpellegrini@tbewellesley.org](mailto:hpellegrini@tbewellesley.org), immediately. The date we receive your completed registration affects your ability to participate in the lottery for particular school sessions.

### **SCHOOL CANCELLATION ANNOUNCEMENTS**

**We automatically cancel school when Wellesley schools are canceled.** A school cancellation announcement will be made on WBZ Radio (1030 AM/TV 4 Sundays only), WCVB TV 5, WRKO Radio (680/WHDH TV 7 Sundays and weekdays), and the Temple Beth Elohim cancellation line #5. Please listen to the radio or TV so the phone lines are kept open for essential calls. You will receive a notice on weekdays if you are on our temple's e-mail broadcast list and from our school grade e-mail lists if your e-mail address is current. Please use your own judgment whether to drive if we do not cancel school.

### **NO CLEATS, PLEASE (AND OTHER ISSUES OF RESPECT)**

While we realize that some students are coming from or going to athletic events, the wearing of cleats is not permitted in school. It leaves dirt, tears up carpeting and scuffs the floor. We appreciate your cooperation and understanding.

A central component of our curriculum in every grade is **derech erez** – thoughtful, respectful behavior. Derech erez applies to everything with which and everyone with whom someone comes into contact. Translated into action, derech erez demands that students treat with respect their classmates, teachers, TAs, professional staff, clergy, custodial staff and visitors. Moreover, students exhibit respect for property, whether it be furniture, school displays, materials or supplies. Students are expected to walk, not run, while in the temple, to speak without screaming and to refrain from fighting, wrestling, or jumping on furniture or on others. Derech erez means that students adopt appropriate behavior as they enter the synagogue and especially when they enter the Sanctuary.

We would appreciate your reinforcing with your children this central Jewish value, explaining that your expectations of them while in the synagogue are exactly the same as your expectations of them in regular school, as guests in someone's home and in a sacred space. We will discuss this issue often with students, and we expect that they will comport themselves appropriately.

### **III. YOUTH GROUPS**

Our TBE community is committed to raising children who are Jewishly cultured and Jewishly literate, with passion for and commitment to *Torah* (Jewish learning), *avodah* (worship), *gemilut chasadim* (deeds of loving kindness), and *tikkun olam* (repairing the world). Engaging our youth and instilling in them a love for Jewish life and learning ensures a bright future for the Jewish people and for our congregation.

Youth groups provide unique and varied opportunities for youth to engage in Jewish life and culture, through experiential programs and informal learning. Most youth groups combine social activities, social action opportunities, holiday celebrations and elements of Jewish study and practice to create rich Jewish experiences for our children and teens.

Stay updated with TBE youth groups! Check out BELY online for event updates and registration, forms, photos and much more. Make sure you bookmark BELY online ([www.belyonline.org](http://www.belyonline.org)) today!

TBE offers youth group experiences for five different age groups:

#### **CHALUTZIM (Kindergarten-1st graders)**

*CHALUTZIM* ("pioneers") is our youth group for kindergarten and 1st graders, and it is a wonderful introduction to youth groups here at TBE. The group will meet periodically throughout the year at the Temple for social and informal programs. Activities will include arts and crafts, holiday programs. For more information contact the Chalutzim Advisor, at [chalutzim@belyonline.org](mailto:chalutzim@belyonline.org).

#### **CHAVERIM (2nd-3rd graders)**

*CHAVERIM* ("friends") is our youth group for 2nd-3rd graders. Activities will be held on Sunday afternoons after religious school and will include social activities, arts and crafts, holiday programs, and age-appropriate community service projects. For more information contact the Chaverim Advisor, at [chaverim@belyonline.org](mailto:chaverim@belyonline.org).

#### **YEDIDIM (4th-5th graders)**

*YEDIDIM* ("good friends"), our 4th-5th grade youth group will meet about once a month during the upcoming school year. The activities, held on Sunday afternoons after religious school, will provide opportunities for kids to get together in our synagogue in an informal setting. Activities will include social gatherings, social action projects, trips, and holiday celebrations. For more information contact the Yedidim Advisor, at [yedidim@belyonline.org](mailto:yedidim@belyonline.org).

#### **IV. THE MADRICHIM (TEACHER ASSISTANTS) PROGRAM**

A *Madrich* who worked in our school for several years wrote: "I have learned many things about children's behavior, teaching methods, and new perspectives on my religion. However, I have also learned about my teaching ability, my love for children, and how important Judaism is to me. Thank you for helping me become a better, more responsible member of our congregation." High school Teaching Assistants give us the opportunity to be enriched on three levels--the school, the madrich/madricha him/herself and the community.

*Madrichim* provide extra hands to teach, do clerical work, update records, take attendance, collect *zedakah*, cover telephones, prepare snacks, and operate audio-visual equipment. Madrichim help with children who need tutoring and who need emotional support, lead small group sessions, and correct objective assignments. They are role models for our children.

The high school madrich has a chance to build skills and confidence in working with young students. It is a chance to learn responsibility, experience a sense of being needed, and develop identity with the temple, teachers and other Madrichim. It's a chance to gain satisfaction that what they do can positively affect the lives of others.

High school students remain involved in the temple in positions of leadership, attend classes through Post-Confirmation, attend Youth Group events, help with temple activities, and continue to have a very positive Jewish experience.

For more information please contact Laura Hyman at 781-235-8417 x 212 or [lhyman@tbewellesley.org](mailto:lhyman@tbewellesley.org)

#### **V. LEARNING COMMITTEE**

The Limud, BM<sup>3</sup>T & Beit Midrash Committee is composed of a group of creative and enthusiastic parents who have come together to contribute to the success of TBE's education programs. With development, program evaluation and teacher appreciation, we are also committed to promoting community within all our programs, for both parents and children, with events such as parent coffees on Sunday mornings and class based social events. We are always looking for new members, new ideas and help with our many projects. If you would like more information or would like to become involved, please contact the committee chair, Karen Wolfson at [kmwolfson@msn.com](mailto:kmwolfson@msn.com)

## VI. OUR RELIGIOUS SCHOOL FACULTY

**Rabbi:** Joel L. Sisenwine

**Cantor:** Jodi Lee Sufrin

**Assistant Rabbi:** Rachel Saphire

**Executive Director, Jewish Learning:** Alison Kur

**Limud & BM<sup>3</sup>T Director:** Dr. Judy Avnery

**Havayah & Beit Midrash Director:** Laura Hyman

**Family Educator:** Mara Rubinstein

**Youth Educator:** Hannah Richman

**Youth Educator:** Stephen Brickman

**Coordinator of Learning Support:** Arlene Lemieux

**Administrative Assistant:** Heather Pellegrini

**Executive Assistant:** Greta Fiester

### **Yvonne Asher – Grade 5**

Yvonne is a PhD student in psychology at Suffolk University. She has a master's degree in Jewish Education from the Jewish Theological Seminary and a bachelor's degree in psychology from Swarthmore College. She has worked in religious schools teaching 4th and 5th grades, as well as in summer camps, most recently serving as the Judaic Director for Camp Sisol in Rochester, NY. Additionally, Yvonne spent this past year teaching preschool at the Wolk Early Childhood Center also in Rochester.

### **Ilana Benivgy – Grade 3**

Ilana is an experienced, certified elementary (and adult education) teacher with a BA in Hebrew Literature from The Hebrew College, and a Master's degree in Jewish Education from The Hebrew College. She has a certified Hebrew teaching Diploma from Oranim College, Israel. She has worked as a full time Modern Hebrew teacher at the Hebrew college for 18 years, teaching both Hebrew and Judaic. She also worked as Hebrew, Judaic and secular teacher at The New Jewish High School in Waltham. In addition, during the last 20 years Ilana worked in the afternoon Hebrew schools, teaching grades two to six.

### **Anne Crystal – Grade 4**

Anne graduated Northeastern University with a degree in education and a minor in sociology. She has been involved in Jewish education for the past twenty years in the Metro West area; having taught grades 1-8 at various synagogues. She has taken many courses from Hebrew College such as Facing History, and attended many workshops geared to developing programs that would help students with special needs. Anne is also a substitute teacher for the Framingham School System. Besides her passion for teaching, she enjoys reading, creative writing, traveling, and spending time with her two chocolate Labradors. She is the mother of two daughters and a proud grandma.

### **Jenifer Gold – Grade 4**

Jenifer Gold is a MA student at Brandeis University. She has a bachelor's degree in Comparative Religion from Cal State Fullerton and a master's degree in Special Education with an emphasis in Deaf and Hard of Hearing at Cal State Northridge. She has worked in religious school teaching 4<sup>th</sup> and 5<sup>th</sup> graders, as well as teaching in the Orange County California's Bureau of Jewish Education youth programs. Originally from Southern California, Jenifer recently returned to the US after living in Israel for 6 years where she taught high school math and history for NFTY EIE (a high school study abroad program).

### **Ariel Goldenthal – Grade 1**

Ariel is a senior at Brandeis University studying Linguistics and Italian. She has taught kindergarten and 1st grade students near her home in the Philadelphia area, Pennsylvania, worked with day campers of the same age, and has been to Israel once--though she wants to go back as soon as possible.

### **Arlene Lemieux – Coordinator of Learning Support**

Arlene returns for her eighth year to TBE with twenty five years experience as religious school director, classroom educator, including sixteen years as a special needs consultant to parents, students and teachers. In her new role at TBE as Coordinator of Learning Support, Arlene looks forward to serving as the Special Needs Coordinator for grades K-7 in the Limud, Beit Midrash and BM<sup>3</sup>T programs. She is also the B'nai mitzvah Coordinator. Her goals include being a resource to teachers and tutors and facilitating successful learning opportunities for each individual student. Arlene is deeply committed to helping every individual to meet their full academic potential.

### **Sharon Levy – Grade 1**

Sharon is a master teacher who has been teaching for more than 30 years. She is a full-time art educator and artist specializing in Judaica. Her flexibility, patience and experience with all levels of learning in a Jewish religious school make her a strong part of our Temple Beth Elohim faculty.

### **Amira Mintz-Morgenthau – Grade 2**

Amira Mintz-Morgenthau is a senior at Brandeis University. She is a native of New York City, but Massachusetts has been my home for the past four years. She is an art history major and a Hebrew and environmental studies minor. Last semester Amira was in Berlin studying urban studies and had an enriching time learning about Germany's immense history and the unique Jewish community there. She also spent a gap year in Israel and has visited Israel on other numerous occasions. Amira has taught at Boston-area Jewish Education Program (BJEP) for the past two years. Some of her hobbies include photography, cooking, and biking. Amira is very excited to be part of the Beth Elohim Limmud and Beit Midrash Programs and working with children!

### **Geoff Mostow – Grade 5**

Geoffrey has a BS in Political Science from Northeastern University. After graduating he backpacked through Europe and then proceeded to live on Kibbutz Ein-Dor where he studied Hebrew and helped Russian Immigrants assimilate into Israel society. Geoff has taught at the Solomon Schechter Day School of Greater Boston, served as a full time educator at Temple Isaiah in Lexington and was most recently employed as the Head of the History Department at the Learning Prep School in West Newton. Geoff is working towards a Masters Degree in Special Education. When not teaching Geoff enjoys skiing, swimming, rooting for all Boston sports teams, and spending time with his wife and son.

### **Dale Norman – Grade 2**

Dale is an experienced Hebrew School teacher with over twenty-five years of experience in area Hebrew Schools and the public school system. She has a special interest in writing; she has been a writer and editor at Boston's *Jewish Advocate* and her stories have appeared in *The Newton Tab*. She has also published poetry books and student newspapers. Dale has a B. SC from Boston University, a M.A. in Judaic Studies from Hebrew College, and a post Baccalaureate in teaching English from Framingham State College. Dale is excited about returning to TBE to teach second grade on Sunday mornings. Dale and her husband Geoffrey

are TBE members and parents of four children.

### **Marilyn Preman - Kindergarten**

Marilyn is the Associate Director at Gan Elohim Nursery School and has been teaching at the Nursery School for 20 years. She has taught 1st grade at TBE in the past and is excited about returning to TBE to teach Kindergarten this year. Marilyn has many innovative and fun ways to promote learning and is looking forward to joining a group of educators and families that share her love of Judaism.

### **Melissa Rubin – Grade 4**

Melissa returns to Temple Beth Elohim after teaching 4th grade Hebrew last year and 4th grade Beit Midrash Hebrew the previous year. Last year she was an assistant teacher in the Yellow Room in TBE's Gan Elohim Nursery School. This year you can find her in the Green Room. Melissa has worked as an art specialist in Jewish camps, taught at Jewish Hebrew schools, worked for Jewish federations, JNF and a private Jewish day school. Melissa has graduate degrees in social work and Jewish communal service and is a wife of 21 years and a mom to three daughters. She loves to share her enthusiasm for all things Jewish with her students and looks forward to a rewarding year.

### **Fran Slate – Grade 2**

Fran is a Human Services professional and a caring, knowledgeable Jew. She has been a hard working, creative, faculty member for over 25 years. Fran's easy going ways and love of children are visible aspects of her classroom.

### **Miriam Smirnov – Grade 5**

Miriam has served variously as Family Educator, Shabbat Programming Coordinator, and teacher for the past fifteen years, and is a magna cum laude graduate of Brandeis University, holding a MA from Tufts University. Miriam is enthusiastic, warm, and energetic; her students will learn to ask questions and look to our tradition for their answers; to respect each other and our world; and most of all to love being Jewish!

### **Caren Swerdlick – Grade 3**

Caren is happy to be back for her 4<sup>th</sup> year teaching 3<sup>rd</sup> grade at TBE. Caren is an experienced, certified elementary school teacher with a BA in Elementary Education from Simmons College and a master's degree in the Teaching of Reading from Wheelock College. She has worked as a full time teacher at the South Area Solomon Schechter Day School in Stoughton for the past 13 years, teaching both Judaic and secular studies first to third grade students for three years and then to second grade students for ten years. In addition, Caren spent 3 years teaching K and 1<sup>st</sup> grade Sunday school at Temple Israel in Natick.

### **Michelle Zaff – Kindergarten**

Michelle is an experienced religious school teacher. She taught grades K, 1, 3 at Temple Beth Shalom in Needham and before that assistant taught a K-1 class at Temple Reyim. She teaches at Beaver Summer Programs over the summer and has two daughters ages ten and seven. Michelle is a teacher in the Green Room at Gan Elohim, Temple Beth Elohim's preschool. Michelle is an attorney and continues to practice law but her love of children and Jewish education continue to draw her into the classroom. She is excited to work with your children this year and to explore the rich kindergarten curriculum together!

## **VII. PARENTAL INVOLVEMENT IN THE SCHOOL**

**Please get involved in the religious school!**  
**Now that you've read through the Parent Manual, we enthusiastically invite you to work with us in one or more areas:**

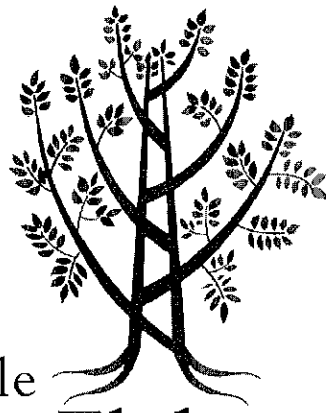
**Make an appointment with your child's teacher to visit the class:** you are always welcome to visit our school and visit a class or two.

**Join the Limud Committee:** The visioning process begun last year will continue as we learn and grow with our new program. We need interested parents to help brainstorm with us, provide feedback and help design an innovative, engaging and compelling school.

**Volunteer in the school:** Opportunities abound throughout the year for parental assistance. Whether you have some time during the week when your child is in midweek religious school, you like to take projects home to work on, you enjoy helping direct traffic (we'll give you an orange day-glo vest!) you love talking to people on the telephone, or you would like to help in any other way, we'd love to have you!

**Join us for our music/T'filah (worship) sessions during the week:** Students in grades 3-6 will have a weekly opportunity to practice their emerging Hebrew skills in an authentic setting and learn contemporary and holiday music. Our song leader will lead this 25 minute session on Tuesday and Wednesday afternoons, reviewing prayers, teaching liturgy and choreography and enjoying the company of our students. You are welcome to join us at any time.

**Attend worship services and holiday celebrations with your family:** There is no better way to become better acquainted with TBE's traditions, meet wonderful people and share the joys of being Jewish than to join our community as it prays and celebrates. You will reap rich rewards by being active and sharing the cycle of Jewish time with like-minded people from all over the local area. Your children will see classmates, you will meet new people or forge deeper connections with people you have already met, and you will feel the bonds that make TBE such a wonderful synagogue community.



Temple  
Beth Elohim  
בית אלהים